

AIR INLET
SELF-REGULATING, ACOUSTIC

anjos

inspirer le bien-être

EM 2 A

22 • 30 • 45 m³/h

Acoustic insulation up to 47 dB
Wall vent for Ø 125 mm holes
Circular holes



EM 2 A

- Acoustic insulation from 30 dB to 40 dB
- Core drilling of \varnothing 125 mm
- Made of white polystyrene

Presentation

EM 2 A 22, 30 and 45 m³/h (at 20 Pa) self-regulating windows air inlets are acoustically insulated. They connect to an external grille via a through-wall penetration. They ensure compliance with new ventilation regulations requiring acoustic performance.



These air inlets contain a damper that ensures a constant flow across a pressure range of 20 to 100 Pa.

They ensure $D_{n,e,w} + C_{tr} \geq 37$ dB (EM A 22, 30) and $D_{n,e,w} + C_{tr} \geq 37$ dB (EM 2 A 45) sound attenuation.

Acoustic performance: $D_{n,e,w} + C_{tr} \geq 39$ dB, required if the square meterage of a room divided by the number of trickle vents is at least 10 m².

Acoustic performance: $D_{n,e,w} + C_{tr} \geq 47$ dB, required if the square meterage of a room divided by the number of trickle vents is less than 10 m².

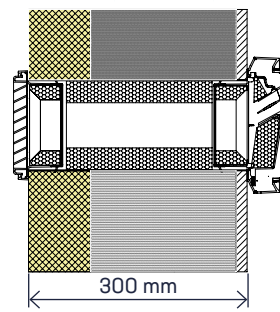
Indoors

EM 2 A

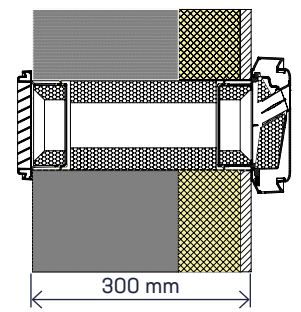


EM 2 A 22, EM 2 A 30 or EM 2 A 45 m³/h dia. 125 mm air inlets. Made of white polystyrene. Flow rates: 22, 30 and 45 m³/h.

L. (mm)	H. (mm)	Thk. (mm)
220	187	54



External insulation



Internal insulation

Composition

- 1 Front cover in white polystyrene (two-tone available on request).
- 2 Foam support in black recycled material.
- 3 Sleeve with support plate in black recycled material.
- 4 Sealing and retaining gasket.

Through-wall penetration

MMM



MAC



MMM 125 steel sleeve, length 300 mm.

L. (mm)	Diameter \varnothing
300	125

MAC 125 acoustic sleeve, length 200 mm.

L. (mm)	Diameter \varnothing
200	125

Outdoors

GEM



GEMM



External grille \varnothing 125, GEM(M) 125.

Made of UV- and weather-resistant white polystyrene.

L. (mm)	H. (mm)	Thk. (mm)
150	150	20,5

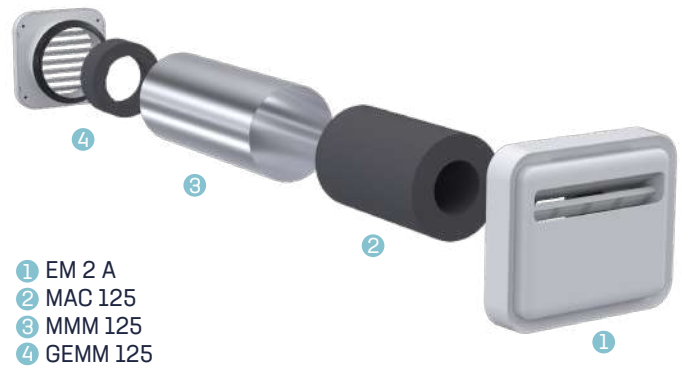
Installation

Ø 125 : drill a hole and seal a metal sleeve Ø 125mm (Ø 125 outside max, Ø 120 inside min), slight outward slope.

Ø 125 with acoustic insulation : add the acoustic sleeve MAC 125.

Indoors : nest the air inlet EM 2 A into the hole.

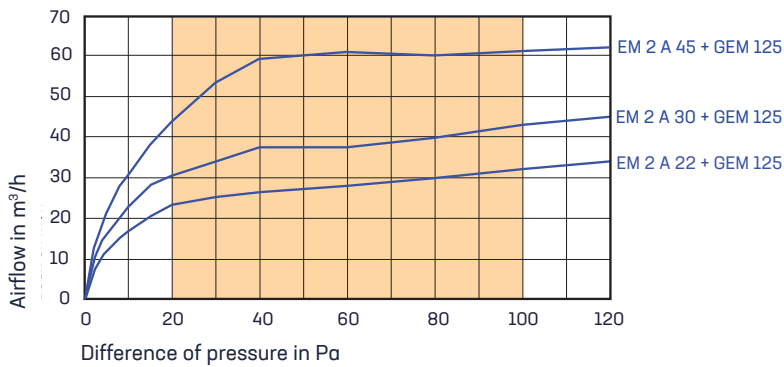
Outdoors : once the wall coating is finished, screw on the GEM or the grille GEMM 125 (for installation with sound insulation) adapter and clip the grille onto the outdoor end of the sleeve.



- ① EM 2 A
- ② MAC 125
- ③ MMM 125
- ④ GEMM 125

Characteristics

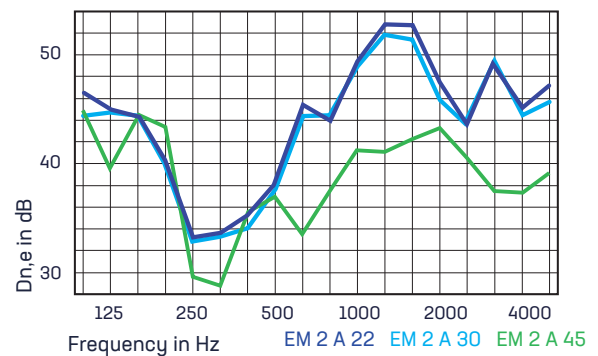
Air flow



Acoustic

Air inlets are characterised by their acoustic performance $D_{n,e,w}$ (Ctr).

Type	$D_{n,e,w}$ [C]	$D_{n,e,w}$ [Ctr]
EM 2 A 22 + grille GEM125	41 dB	39 dB
EM 2 A 30 + grille GEM125	41 dB	39 dB
EM 2 A 45 + grille GEM125	38 dB	37 dB
EM 2 A 22 + MMM 125 + MAC 125 + GEMM 125	50 dB	47 dB
EM 2 A 30 + MMM 125 + MAC 125 + GEMM 125	50 dB	47 dB
EM 2 A 45 + MMM 125 + MAC 125 + GEMM 125	50 dB	47 dB



The air inlets associated with the facade grilles comply with the NF E 51-732 standard.

Colours



code 4209 BLG7

Standard white (RAL 9016), option available in two-tone standard code (white) + 4 letters.

Example : air inlet EM 2 A two-tone : code 4209 BLG7
Actual colors may slightly differ from the RAL.

Product codes

Designation	Code	Packg.
EM 2 A 22	4208	8
EM 2 A 30	4209	8
EM 2 A 45	4225	8

Designation	Code	Packg.
Metal sleeve MMM 125, Ø 125 lg. 300 mm	2212	6
Acoustic Sleeve MAC 125, lg. 200 mm	2216	8
External grille Ø 125 GEM 125	4205	18
External grille Ø 125 GEMM 125	4207	18

anjos