

AIR INLET
HUMIDITY-CONTROLLED, ACOUSTIC

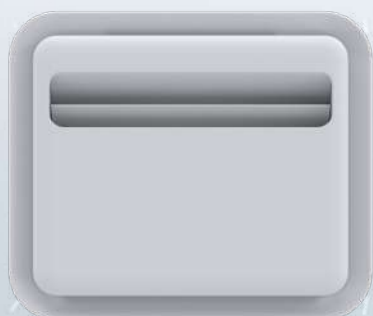
anjos

inspirer le bien-être

EM 2 HY

5/45 m³/h

Acoustic insulation up to 47 dB
Wall vent for Ø 100 and 125 mm holes
Circular hole

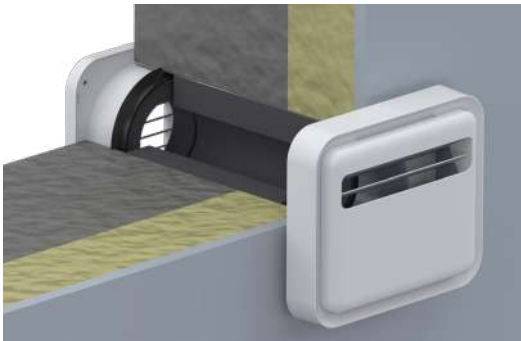


EM 2 HY

- Acoustic insulation up from 30 dB to 40, dB
- Core drilling of Ø 100 or 125 mm
- Made of white polystyrene

Presentation

Used in MEV systems type Hygro B (Technical advices «Humidity controlled MEV ALIZÉ for collective housings» and «Humidity controlled MEV ALIZÉ for individual housings»), the air inlet EM 2 HY is combined with humidity-controlled and temporized exhaust valves. It meets the requirements of the new NRA acoustic regulations.



The air vents ensure a variable flow rate of 5 to 45 m³/h depending on room humidity levels and for a 20 Pa pressure difference.

The air inlet EM 2 HY ensure an acoustic insulation of ESA 5 class (CSTB solutions examples) for façade classification of 30 dB :

Class ESA 5 : $D_{n,e,w} + C_{tr} \geq 39$ dB,

for a room area in m² / number of air inlets < 10.

Class ESA 7 : $D_{n,e,w} + C_{tr} \geq 47$ dB (sound insulation and through-wall penetration),

for a room area in m² / number of air inlets < 10.

Indoors

EM 2 HY

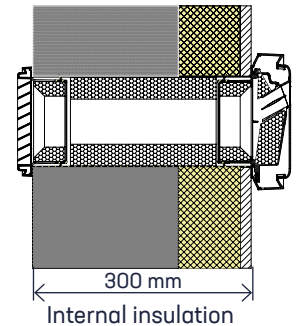
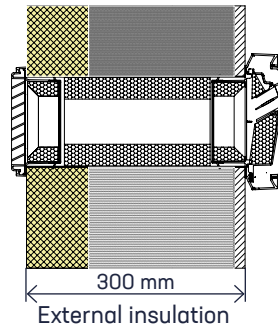


Humidity-controlled air inlet Ø 100 **EM 2 HY 100** or Ø 125 **EM 2 HY 125**.

Made of white polystyrene.

Flow rate 5/45 m³/h

L. (mm)	H. (mm)	Thk. (mm)
220	187	54



Composition

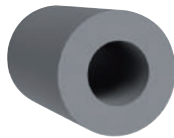
- 1 Front cover in white polystyrene (two-tone available on request).
- 2 Foam support in black recycled material.
- 3 Sleeve with support plate in black recycled material.
- 4 Sealing and retaining gasket.

Through-wall penetration

MMM



MAC



Metal sleeve **MMM 100**, Ø 100 or **MMM 125**, Ø 125 mm, length 300 mm.

L. (mm)	Diameter Ø
300	100 or 125

Acoustic sleeve **MAC 125**, Ø 125 mm, length 200 mm.

L. (mm)	Diameter Ø
200	125

Outdoors

GEM



GEMM



External grille Ø 100 **GEM 100** or Ø 125 **GEM(M) 125**.

Made of UV-resistant and weather-resistant white polystyrene.

L. (mm)	H. (mm)	Thk. (mm)
150	150	20,5

Installation

Ø 100 : drill a hole and seal a metal sleeve Ø 100 mm (Ø 100 outside max, Ø 97 inside min), slight outward slope.

Indoors : nest the air inlet EM 2 HY 100 into the hole.

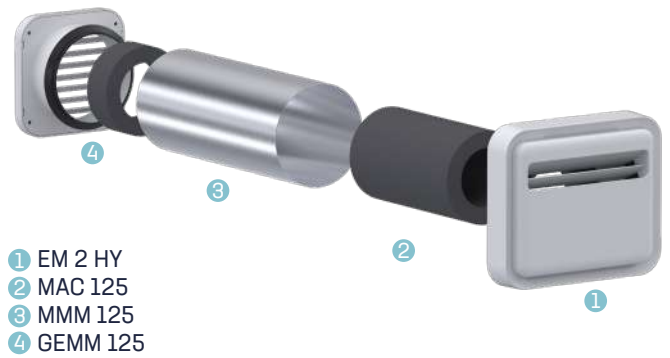
Outdoors : once the wall coating is finished, screw on the GEM grille adapter and clip the grille onto the outdoor end of the sleeve.

Ø 125 : drill a hole and seal a metal sleeve Ø 125mm (Ø 125 outside max, Ø 120 inside min), slight outward slope.

Ø 125 with acoustic insulation : add the acoustic sleeve MAC 125.

Indoors : nest the air inlet EM 2 HY 125 into the hole.

Outdoors : once the wall coating is finished, screw on the GEM or the GEMM grille adapter (for installation with sound insulation) and clip the grille onto the outdoor end of the sleeve.

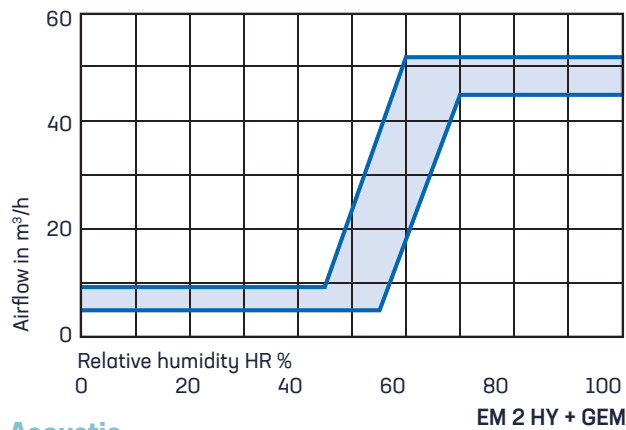


Characteristics

Test reports

Technical Opinions on Humidity-Controlled Ventilation Systems «Humidity controlled MEV ALIZÉ for collective housings» 14.5/17-2269 et «Humidity controlled MEV ALIZÉ for individual housings» 14.5/17-2268.

Air flow

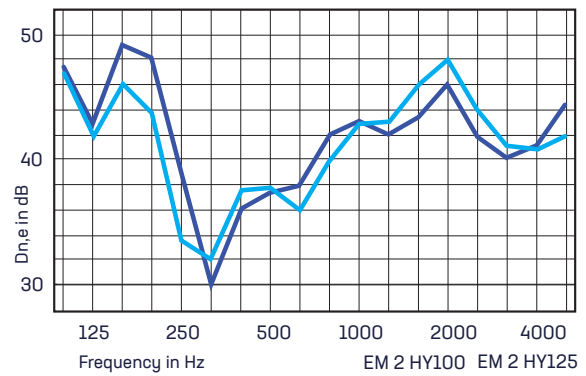


The graph shows the nominal air characteristics as a function of humidity level of the indoor air and for a 20 Pa pressure difference.

Acoustic

Air inlets are characterised by their acoustic performance $D_{n,e,w}(Ctr)$.

Type	$D_{n,e,w}(C)$	$D_{n,e,w}(Ctr)$
EM 2 HY 100 + MMM 100 + GEM grille 100	40 dB	39 dB
EM 2 HY 125 + MMM 125 + GEM grille 125	40 dB	39 dB
EM 2 HY 125 + MMM 125 + MAC 125 + GEMM 125	50 dB	47 dB



Colors

RAL 7016 G7 anthracite

RAL 9011 NO black



code 4201 BLG7

Standard white (RAL 9016), option available in two-tone standard code (white) + 4 letters.

Example : air inlet EM 2 HY two-tone white/grey : code 4201 BLG7
Actual colors may slightly differ from the RAL.

Product codes

Designation	Code	Packg.
EM 2 HY 100	4201	8
EM 2 HY 125	4202	8
Metal sleeve MMM 100 - Ø 100, L: 300 mm	2210	10
Metal sleeve MMM 125 - Ø 125, L: 300 mm	2212	6

Designation	Code	Packg.
Acoustic sleeve MAC 125, lg. 200 mm	2216	8
External grille Ø 100 GEM100	4204	18
External grille Ø 125 GEM 125	4205	18
External grille Ø 125 GEMM 125	4207	18

anjos