

AIR INLET  
SELF-REGULATING, ACOUSTIC

**anjos**  
Inspirer le bien-être

# MINI ÉSÉA

15 • 22 • 30 m<sup>3</sup>/h

Slot sizes : 250 × 12 mm 172 × 12 mm (15 and 22 m<sup>3</sup>/h)

Acoustic

Installation on windows



\* (except Mini ÉSÉA RA-ME)



# MINI ÉSÉÁ

- 30 dB(A) acoustic performance:  $D_{n,e,w} + C_{tr} \geq 36$  dB (250 × 12 mm slots) or
- $D_{n,e,w} + C_{tr} \geq 39$  dB (172 × 12 mm slots for 15 and 30 m<sup>3</sup>/h)
- Breakable segments achieve flow rates of 22 or 30 m<sup>3</sup>/h with just one Mini-ÉSÉÁ 15
- Made of white polystyrene
- Other colors : beige, bronze, light oak, golden oak, dark oak, grey, dark grey, anthracite grey, black and sipo mahogany
- Suitable for vertical walls and all angled surfaces

## Presentation

Mini ESEA self-regulating acoustic windows air inlets are designed for use in habitable rooms of dwellings to draw in fresh air from single-flow MEV systems. They ensure compliance with new ventilation regulations requiring acoustic performance ( $D_{nT,Atr}$ ) of 30 dB(A).



These windows inlet contain a flexible polyester strip that ensures a constant flow across a pressure range of 20 to 100 Pa.

On request, Mini ESEA windows inlets are available with a 15 m<sup>3</sup>/h flow rate and snap-off tabs to obtain a flow rate of 22 or 30 m<sup>3</sup>/h. They fit into 250 × 12 mm and 172 × 12 mm slots (15 and 22 m<sup>3</sup>/h for the latter slot size). Sound attenuation :  $D_{n,e,w} + C_{tr} \geq 36$  dB for Mini ÉSÉÁ in 250 × 12 mm slots or  $D_{n,e,w} + C_{tr} \geq 39$  dB for Mini ÉSÉÁ 15 and 22 in 172 × 12 mm slots.

Acoustic performance :  $D_{n,e,w} + C_{tr} \geq 36$  dB, required if the square meterage of a room divided by the number of trickle vents is at least 10 m<sup>2</sup>. Acoustic performance :  $D_{n,e,w} + C_{tr} \geq 39$  dB, required if the square meterage of a room divided by the number of trickle vents is less than 10 m<sup>2</sup>.

When fitted in 172 × 12 mm slots, our Mini ÉSÉÁ RA-ME 15 and 22 windows inlets ensure acoustic performance of 35 dB ( $D_{n,e,w} (C_{tr}) = 42$  dB).

## Indoors

### Mini ÉSÉÁ



The air inlets **Mini ESEA** are fixed on the window, on a slot size 250 × 12 mm. Flow rates of 15 and 22 m<sup>3</sup>/h can be obtained with 172 × 12 mm slots.

L. (mm)	H. (mm)	Thk. (mm)
305	36	35

### Mini ÉSÉÁ RA-ME



L. (mm)	H. (mm)	Thk. (mm)
305	36	65

## Outdoors

### CEA



**CE2A** outer cover is made in white ABS ASA or on request in all other colours of the range.

Installation is made on sheltered surfaces. For all other cases, please consult us.

L. (mm)	H. (mm)	Thk. (mm)
295	20	8

### Mini CFA



Made of aluminum (available in 3 colors) and equipped with an acoustic element, the **Mini CFA** outer cover acoustic improves the sound insulation of the air inlet. It is installed in place of the CEA outer cover. Designed for installation on weather-protected surfaces.

L. (mm)	H. (mm)	Thk. (mm)
295	35	45

For additional sleeves or accessories, refer to our documentation on M-G self-regulating air inlets.

## Installation

**Mini ESEA :** The base is fixed on the window with **2 screws**. The air inlet is simply fitted on the base.

**Mini ESEA RA :** The acoustic extension RA is screwed on the window with **2 screws**, the air inlet goes fitting into it. Outdoors, the outer cover type **CEA** is screwed with **3 screws** on a slot of 250 × 12 or 172 × 12 mm.

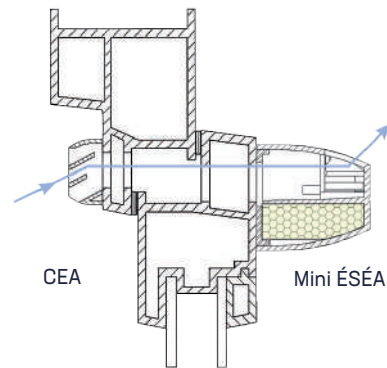
Optional screw caps are available to cover the screws on the outer cover. After installing the outer cover, insert the screw caps into the holes. Make sure that the slit on each screw cap is pointing towards the middle of the vent. The screws and screw caps are available only in some kits (windows inlet + outer cover).

**All the components must remain easily accessible for cleaning.**

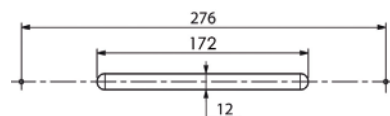
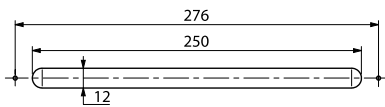


- ① Base
- ② Air inlet
- ③ Outer cover

- ① Acoustic extension RA
- ② Air inlet
- ③ Outer cover



## Slots



Mini ÉSÉA 30 and Mini ÉSÉA 30 RA-ME windows inlets fit only into 250 × 12 mm slot.

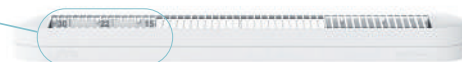
## Identifying the air flow

Mini ÉSÉA 15, 22 and 30 m<sup>3</sup>/h windows inlets are delivered at the requested flow rate (15, 22 or 30 m<sup>3</sup>/h). The flow rate is indicated

The 15 m<sup>3</sup>/h model makes it possible to achieve flow rates of 22 or 30 m<sup>3</sup>/h. To do so, carefully break the snap-off tabs at the time of fitting.

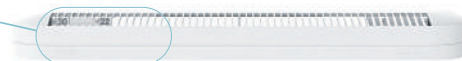
on the two clips of the regulator element (22, 30 and 45 markings). **The smallest value indicates the flow rate.**

**Break both breakable segments marked '15' to obtain a flow rate of 22 m<sup>3</sup>/h or both breakable segments marked '22' to obtain 30 m<sup>3</sup>/h.**



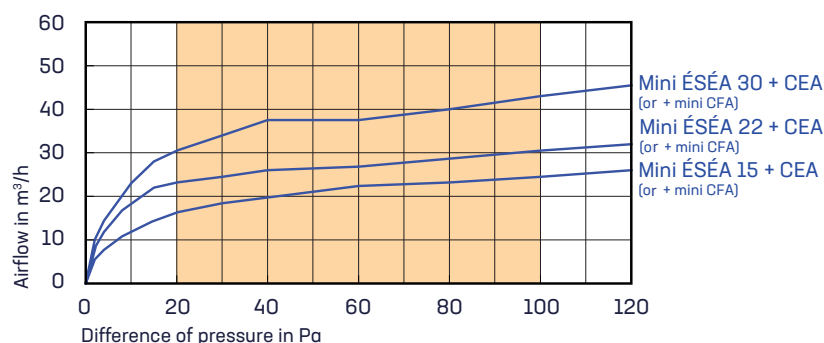
The 22 m<sup>3</sup>/h model makes it possible to achieve flow rates of 30 m<sup>3</sup>/h.

**To do so, carefully break both breakable segments marked '22' at the time of fitting.**



## Characteristics

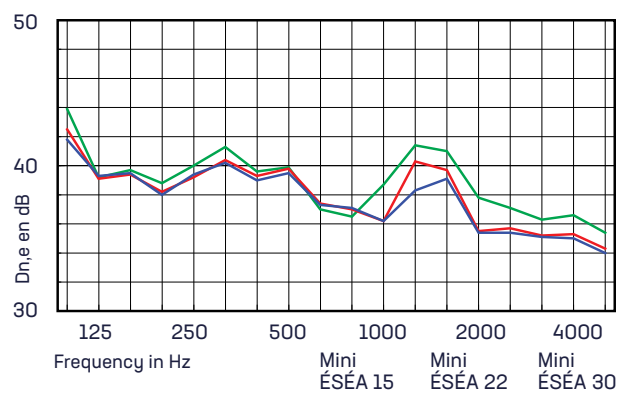
### Air flow



These window inlets associated with outer cover comply the French standard NF E51-732.

### Acoustic

Type	250 x 12 mm		172 x 12 mm	
	Dn,e,w(C)	Dn,e,w(Ctr)	Dn,e,w(C)	Dn,e,w(Ctr)
Mini ÉSÉA 15 + CEA	37 dB	38 dB	39 dB	39 dB
Mini ÉSÉA 22 + CEA	37 dB	38 dB	39 dB	39 dB
Mini ÉSÉA 30 + CEA	37 dB	37 dB		
Mini ÉSÉA 15 RA-ME + CEA	40 dB	40 dB	42 dB	42 dB
Mini ÉSÉA 22 RA-ME + CEA	40 dB	40 dB	42 dB	42 dB
Mini ÉSÉA 30 RA-ME + CEA	39 dB	39 dB		
Mini ÉSÉA 15 + mini CFA	40 dB	41 dB	42 dB	43 dB
Mini ÉSÉA 22 + mini CFA	40 dB	41 dB	42 dB	43 dB
Mini ÉSÉA 30 + mini CFA	40 dB	41 dB		
Mini ÉSÉA 15 RA-ME + mini CFA	43 dB	43 dB	44 dB	45 dB
Mini ÉSÉA 22 RA-ME + mini CFA	43 dB	43 dB	44 dB	45 dB
Mini ÉSÉA 30 RA-ME + mini CFA	42 dB	43 dB		



### Test reports

CSTB\* test report VE-AC10-26030789 (Mini ESEA + CEA)

\*Centre Scientifique et Technique du Bâtiment (Scientific and Technical Center for Building)

### Colours

RAL	9016	1013	8019	1011	8003	8024	7035	7011	7016	9011
	White	BEige	BRonze	Light Oak	Golden Oak	Dark Oak	GRey	Dark Grey	G7	Black
		BE	BR	CC	CD	CF	GR	GF	G7	NO

← See below if ordering a colour other than white.

### Product codes

Description	Code	Packg.
Mini ÉSÉA 15	0841	84
Mini ÉSÉA 22	0842	84
Mini ÉSÉA 30	0842	84
Mini ÉSÉA 15 RA-ME	0873	42
Mini ÉSÉA 22 RA-ME	0874	42
Mini ÉSÉA 30 RA-ME	0875	42

The above codes refer to white-coloured products. To order a different colour, add the two letters of the desired corresponding colour to the end of the standard product code.

For example, to order a grey Mini ÉSÉA 30 trickle vent, add 'GR' to the end of product code '0842'.

Description	Code	Packg.
Mini ÉSÉA acoustic attachment	0872	84
Outer cover CEA	0165	600
Outer cover acoustic Mini CFA (anodised aluminium)	0808	84
Outer cover acoustic Mini CFA (white lacquered aluminium)	0809	84
Outer cover acoustic Mini CFA (black lacquered aluminium)	0810	84

