

MOTORISED
DAMPERS

anjos

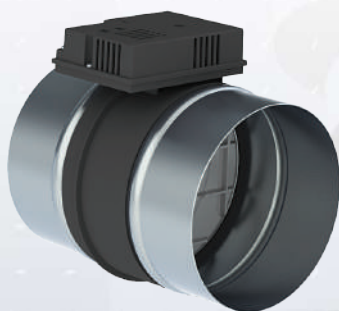
inspirer le bien-être

RMVT

Ø 100 to 200 mm

230 V or 24 VAC/DC control

Thermal actuator

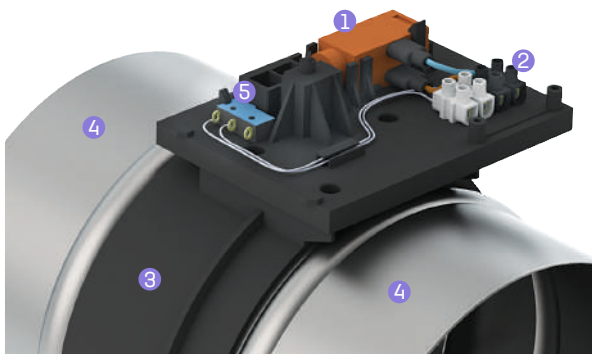


RMVT

- On/Off air-flow control
- Galvanised steel casings
- Body and blade made of flame-retardant plastic (M1)
- Optional limit switch for connection to a power indicator

Presentation

RMVT motorised dampers are powered by an On/Off blade driven by a thermal actuator. They feature a 100 mm to 200 mm circular blade to shut off the flow of air in sections of ventilation and air conditioning systems.



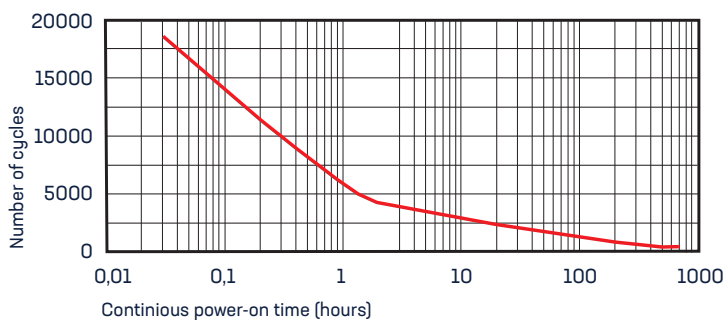
View of the plate with optional limit switch

- 1 Thermal actuator for opening the blade
- 2 Screw terminal
- 3 Body and made of flame-retardant plastic (M1)
- 4 Galvanised steel casings
- 5 Optional limit switch

Characteristics

- 230 V power supply (or 12/24 VAC/DC) two-wire cable (2 × 0.75 mm²)
- Power consumption: 3.5 W at 230 V (2.8 W at 24 V)
- Operating pressure: P ≤ 200 Pa
- Maximum operating temperature: 60°C
- **Maximum operating time: 12 hours non-stop**

Response time	NC damper	NO damper
Open	60 seconds	180 seconds
Close	180 seconds	60 seconds



The chart opposite shows the maximum number of open/close cycles as a function of the continuous operation time of the motorised dampers.

E.g. in the case of a 12-hour cycle, the dampers are guaranteed for a total of around 2500 cycles.

Installation

Recommendations

These dampers fit all 100-200 mm round ducts. They must remain easily accessible for maintenance.

Slide the ends of the ducts over the metal casings up to the edges of the plastic body of the damper. Secure the ducts with mastic, adhesive tape, or clamps.

Do not insert screws into the plastic body or into a 20 mm area on either side of it. Doing so may jam the damper blade. Screws with a maximum length of 20 mm may be inserted beyond this area.

Never turn the blade by hand. Doing so may damage the motor.

Never remove the metal casings from the plastic body of the damper.

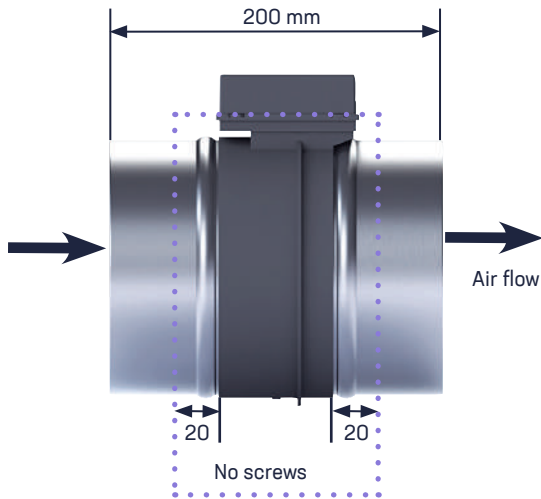
Leave sufficient free space around the protective housing containing the thermal actuator. Do not cover the housing with glass wool or any other such materials. Doing so may cause the actuator to overheat.

Always position the dampers so that the housing containing the actuator is on the top or the side, never on the bottom.

These dampers are set to be fully open or fully closed. They cannot be placed in intermediate positions. Do not fit stops to prevent the dampers from fully opening or closing.

Never operate the dampers for extended periods in conditions of high humidity and never above a relative humidity of 90%.

The dampers must not be used for more than 12 hours non-stop.



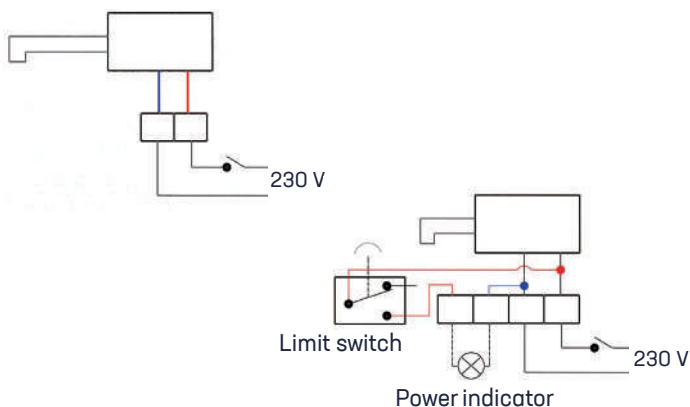
Electrical connections

For safety purposes, install a 1-amp phase-neutral circuit breaker in the distribution board. Remove the housing. Route the two-wire cable ($2 \times 0.75 \text{ mm}^2$)

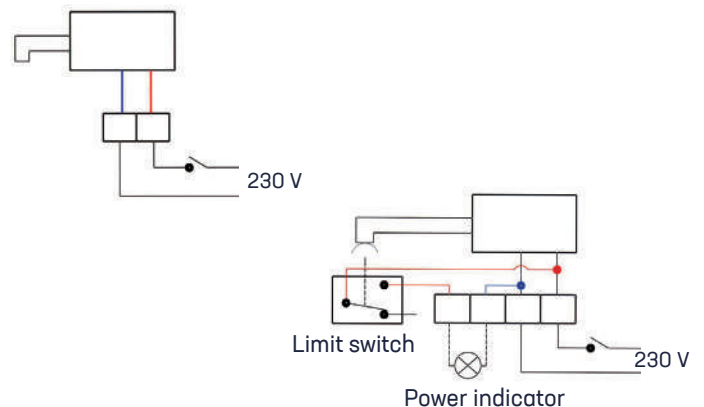
through the channel provided on the motor support plate and connect them to the junction box. The optional limit switch may be wired to a power indicator.

Caution: Always disconnect the power to the circuits of the dampers before attempting to service them.

NC dampers



NO dampers



Characteristics

Product codes

RMVT - NC - 230 V

Description	Code
RMVT - dia. 100 - 230 V - NC	1220
RMVT - dia. 125 - 230 V - NC	1221
RMVT - dia. 150 - 230 V - NC	1222
RMVT - dia. 160 - 230 V - NC	1223
RMVT - dia. 200 - 230 V - NC	1225

RMVT - NC - 12/24 VAC/DC

Description	Code
RMVT - dia. 100 mm - 12/24 V - NC	1220-24V
RMVT - dia. 125 mm - 12/24 V - NC	1221-24V
RMVT - dia. 150 mm - 12/24 V - NC	1222-24V
RMVT - dia. 160 mm - 12/24 V - NC	1223-24V
RMVT - dia. 200 mm - 12/24 V - NC	1225-24V

RMVT - NO - 230 V

Description	Code
RMVT - dia. 100 - 230 V - NO	1280
RMVT - dia. 125 - 230 V - NO	1281
RMVT - dia. 150 - 230 V - NO	1282
RMVT - dia. 160 - 230 V - NO	1283
RMVT - dia. 200 - 230 V - NO	1285

RMVT - NO - 12/24 VAC/DC

Description	Code
RMVT - dia. 100 mm - 12/24 V - NO	1280-24V
RMVT - dia. 125 mm - 12/24 V - NO	1281-24V
RMVT - dia. 150 mm - 12/24 V - NO	1282-24V
RMVT - dia. 160 mm - 12/24 V - NO	1283-24V
RMVT - dia. 200 mm - 12/24 V - NO	1285-24V

OPTIONAL LIMIT SWITCH

Description	Code
Add 'FC' after the product code	XXXX FC