

AIR INLET  
SELF-REGULATING, ACOUSTIC

**anjos**

inspirer le bien-être

# ISOLA

22 • 30 • 45 m<sup>3</sup>/h

Slot size 354 x 12 mm

Acoustic insulation up to 42 dB

Installation on windows



# ISOLA

- 30 to 35 dB acoustic performance requirements
- Installation on windows
- Made of white polystyrene
- Other colors : beige, bronze, light oak, golden oak, dark oak, grey, dark grey, anthracite grey and black

## Presentation

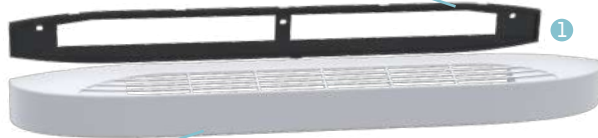
ISOLA self-regulating acoustic windows air inlets are designed for use in habitable rooms of dwellings to draw in fresh air from single-flow MEV systems. They ensure compliance with new ventilation regulations requiring acoustic performance (DnT,Atr) from 30 dB to 35 dB.



### Indoors

#### ISOLA

Base made of black recycled material



Front cover made of white polystyrene (colour on request)  
Black recycled material blade holder

#### ISOLA RA

Acoustic extension made of white polystyrene (colour on request)



### Outdoors

#### CE2A



#### CFA



Installation A



Installation B

**Acoustic performance:  $D_{n,e,w} + C_{tr} \geq 36$  dB**, required if the square meterage of a room divided by the number of trickle vents is at least 10 m<sup>2</sup>.

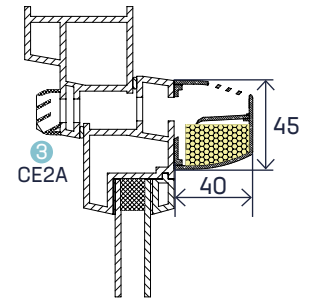
**Acoustic performance:  $D_{n,e,w} + C_{tr} \geq 39$  dB**, required if the square meterage of a room divided by the number of trickle vents is less than 10 m<sup>2</sup>.

ISOLA 22 RA, ISOLA 30 RA and ISOLA 45 RA + CFA windows inlet ensure sound attenuation ( **$D_{n,e,w}$  (Ctr)**) up to 41 dB to meet 35 dB acoustic performance requirements.

The air inlets **ISOLA** are fixed on the window, on a slot size **354 x 12 mm**.

- 1 Base
- 2 Air inlet
- 3 Outer cover CE2A

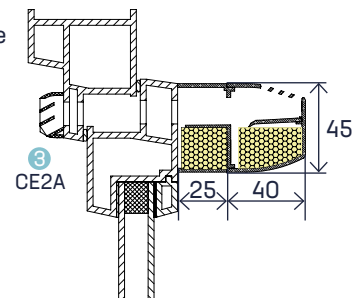
L. (mm)	H. (mm)	Thk. (mm)
422	45	40



The air inlets **ISOLA RA** are fixed on the window, on a slot size **354 x 12 mm**.

- 1 Acoustic extension RA
- 2 Air inlet
- 3 Outer cover CE2A

L. (mm)	H. (mm)	Thk. (mm)
422	45	64



**CE2A** outer cover is made in white ABS ASA or on request in all other colours of the range. Installation is made on sheltered surfaces.

L. (mm)	H. (mm)	Thk. (mm)
400	23	12

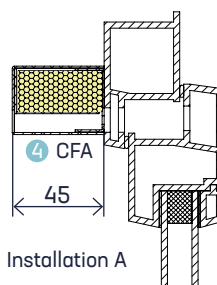
The outer cover **CE2A** is mounted on a slot size **354 x 12 mm**.

Made of aluminum (3 colours) with an acoustic element, the **CFA** acoustic front cover improves the sound insulation of the air inlet. It is installed in place of the CE2A cover.

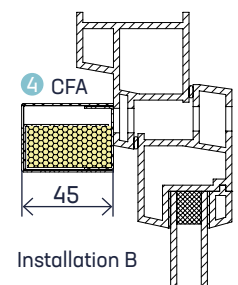
Mounting on surfaces sheltered from the weather.

L. (mm)	H. (mm)	Thk. (mm)
390	35	45

**CFA** is mounted on a slot size **354 x 12 mm**.



Installation A



Installation B

## Installation

Inside, the base of the air inlet (ISOLA) or the acoustic extension (ISOLA RA) is surface-mounted and fixed with 3 screws on the 354 x 12 mm slot. The outer cover is mounted by simply fitting it onto the base or the acoustic extension.

Installation on windows and all inclined surfaces.

Rounded windows : Use a curved base placed between the air inlet and the joinery (same color as the air inlet).

Outdoors, the outer cover type **CE2A** is screwed with **3 screws** on a slot of 354 x 12 mm.

Optional screw caps are available to cover the screws on the outer cover.

## Characteristics

The air inlets associated with the exterior acoustic cover comply with the NF E 51-732 standard.

### Test reports

Test reports: CSTB

ISOLA 22: C2A 24-38303

ISOLA 30 RA: C2A 24-38330

ISOLA 22 RA: C2A 24-38327

ISOLA 45: C2A 24-38321

ISOLA 30: C2A 24-38306

ISOLA 45 RA: C2A 24-38299

### Air flow

The regulating element made of a flexible polyester blade, ensures a constant flow rate within a pressure range of 20 to 100 Pa.

### Acoustic

Air inlets are characterised by their acoustic performance  $D_{n,e,w}$  (Ctr).

Type	$D_{n,e,w}$ (C)	$D_{n,e,w}$ (Ctr)
ISOLA 22 + CE2A	39 dB	39 dB
ISOLA 30 + CE2A	39 dB	39 dB
ISOLA 45 + CE2A	37 dB	37 dB
ISOLA 22 RA + CE2A	41 dB	41 dB
ISOLA 30 RA + CE2A	41 dB	41 dB
ISOLA 45 RA + CE2A	39 dB	39 dB
ISOLA 22 RA + CFA	43 dB	42 dB
ISOLA 30 RA + CFA	42 dB	42 dB
ISOLA 45 RA + CFA	41 dB	41 dB

### Colours

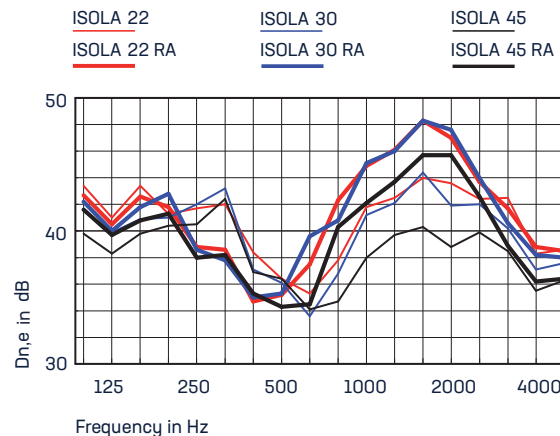
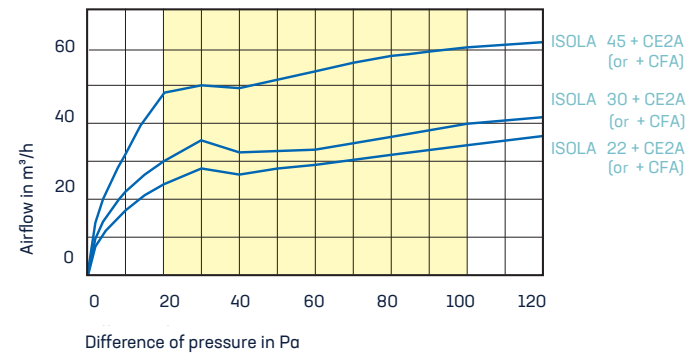
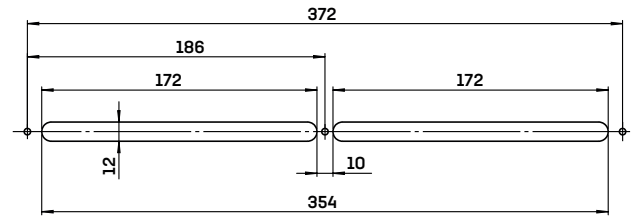
RAL	9016	1013	8019	1011	8003	8024	7035	7011	7016	9011
	White	BEige	BRonze	Light Oak	Golden Oak	Dark Oak	GRey	Dark Grey	G7	Black
		BE	BR	CC	CD	CF	GR	GF	G7	NO

### Product codes

Designation	Code	Pckg.
ISOLA 22	4601	42
ISOLA 30	4602	42
ISOLA 45	4603	42
ISOLA 22 RA	4605	28
ISOLA 30 RA	4606	28
ISOLA 45 RA	4607	28

For additional sleeves or accessories, refer to the documentation for M-G self-regulating air inlets.

All the components must remain easily accessible for cleaning.



The codes below refer to white-coloured products. To order a different colour, add the two letters of the desired corresponding colour to the end of the standard product code.

For example, to order a grey ISOLA 30 window inlet, add 'GR' to end of product code '4602'.

Designation	Code	Pckg.
Acoustic extension RA	0610	50
Rounded vent for ISOLA (RA)	0615	200
Outer cover CE2A	0146	250
Exterior acoustic cover CFA (anodized aluminium)	0194	44
Exterior acoustic cover CFA (white lacquered aluminium)	0195	44
Exterior acoustic cover CFA (black lacquered aluminium)	0196	44

**anjos**