

SILENCERS
THROUGH-WALL PENETRATION

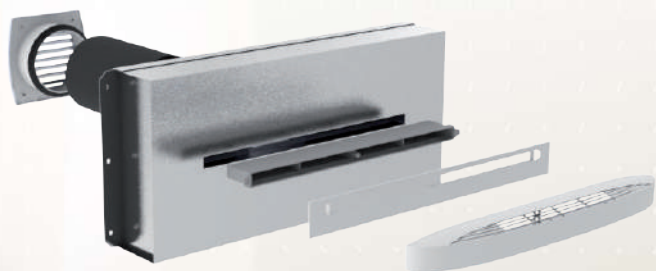
anjos

inspirer le bien-être

SRT+

22 • 30 • 45 m³/h • Hygro

For internally insulated walls
Circular hole
Wall attenuation : 48 à 51 dB



SRT+

- Guarantees a wall attenuation of 48 to 51 dB
- Made of steel sheet
- For horizontal or vertical installation in all internally insulated walls
- SRT+ 30/57 silencers for use with ISOLA 22 or ISOLA 30 self-regulating trickle vents
- SRT+ 45/54 silencers for use with ISOLA 45 trickle vents or ISOLA HY humidity-controlled trickle vents.

Presentation

SRT+ 30/57 or SRT+ 45/54 silencers are designed for use in combination with mechanical extract ventilation systems. They are made entirely of steel sheet and may be fitted at their fronts with Anjos self-regulating or humidity-controlled air inlets.

They meet 48 to 51 dB acoustic insulation requirements depending on configuration.



The connection cylinders of **SRT+ 30/57** silencers (for use with 22 and 30 m³/h self-regulating air inlets) are fitted with acoustic foam (135 mm length x 20 mm thickness).

The connection cylinders of **SRT+ 45/54** silencers (for use with 45 m³/h self-regulating and humidity-controlled air inlets) are fitted with acoustic foam (135 mm length x 15 mm thickness).

Indoors

ISOLA HY



ISOLA HY humidity-controlled, acoustic air inlet.

L. (mm)	H. (mm)	Thk. (mm)
420	45	40

ISOLA



ISOLA 22, 30 or 45 m³/h self-regulating, acoustic air inlet.

L. (mm)	H. (mm)	Thk. (mm)
422	45	45

Outdoors

GEM



GEM external grilles nest inside ducts. Made of UV- and weather-resistant white ASA.

L. (mm)	H. (mm)	Thk. (mm)
150	150	20

Components



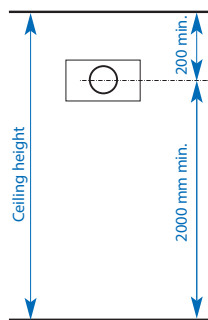
- ① Acoustic air inlet
- ② Faceplate for ISOLA, assembly with MPR
- ③ MPR plastic adjustment sleeve (L: 50 mm)
- ④ SRT+ silencer
- ⑤ dia. 125 × L 200 mm plastic sleeve
- ⑥ GEM 125 external grille (dia. 125 mm)

Installation

SRT+ silencers fit inside insulation placed against exterior walls. Drill a slightly outward inclined hole in a wall (see diagram opposite). Insert the dia. 125 mm plastic sleeve and apply caulking around the circumference of the sleeve. Fasten the silencer to the wall. Install the insulation, making sure to cover the front and side surfaces of the **SRT+** silencer with the insulation to avoid thermal bridging.

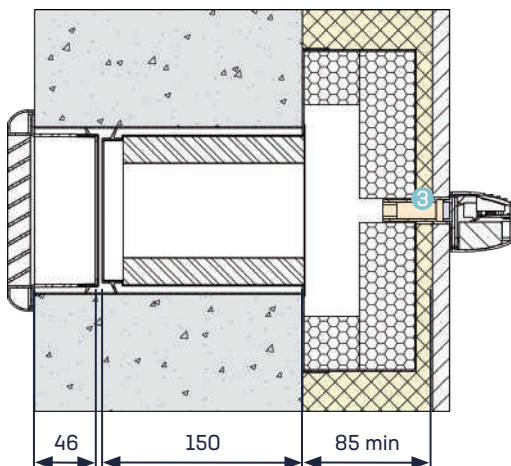
The **MPR** sleeve inserted through the insulation must extend at least 10 mm inside the silencer. This sleeve makes it possible to use the silencer in insulated plasterboard (90 mm+10 mm to 110 mm+10 mm). For greater insulation thicknesses, nest a second adjustment sleeve into the first sleeve.

Fit the faceplate and screw the air inlet onto the adjustment sleeve. After the external wall coating has been applied, push-fit the **GEM 125** outer grille onto the outdoor end of the duct.

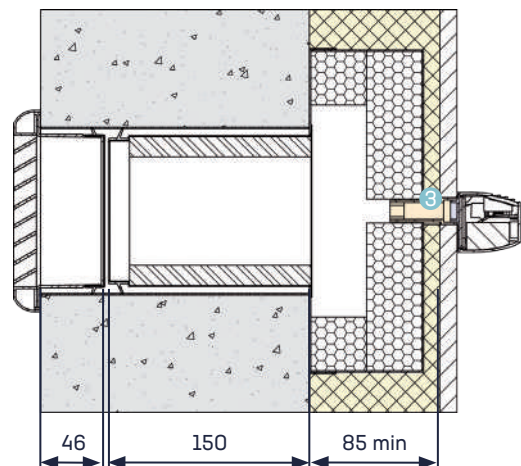


Fit the components at the indicated heights to avoid discomfort to occupants.

SRT+ 30/57 + MPR (3) + faceplate + ISOLA 22/30



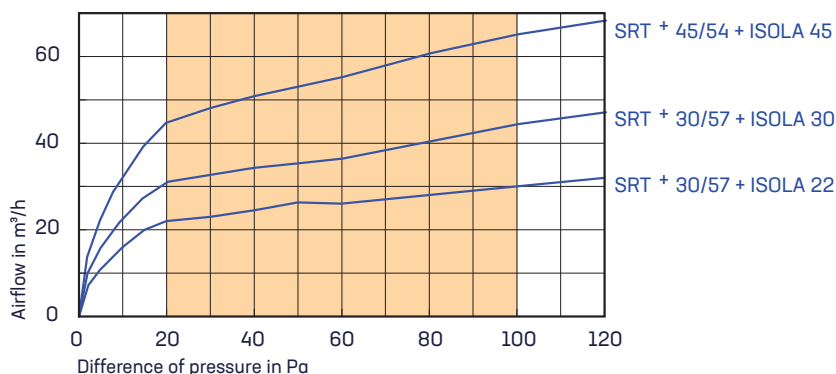
SRT+ 45/54 + MPR (3) + faceplate + ISOLA 45



Characteristic

Air flow

Characteristics with self-regulating air inlets.



Acoustic

Type	Dn,e,w [C]	Dn,e,w [Ctr]
SRT+ 30/57 + ISOLA 22	60 dB	57 dB
SRT+ 30/57 + ISOLA 30	60 dB	57 dB
SRT+ 45/54 + ISOLA 45	57 dB	54 dB
SRT+ 45/54 + ISOLA HY	57 dB	55 dB

Test reports

CETIAT* test report No. 1014179-2

* Centre Technique des Industries Aéronautiques et Thermiques

Product codes

Description	Code
SRT+ 30/54 (for ISOLA 22 or 30 m³/h)	0972
SRT+ 30/54 (for ISOLA HY or 45 m³/h)	0973
MPR adjustment sleeve (L: 50 mm) + faceplate for ISOLA	0670
ISOLA 22 self-regulating air inlet	4601
ISOLA 30 self-regulating air inlet	4602
ISOLA 45 self-regulating air inlet	4603
ISOLA HY humidity-controlled air inlet	0690
PVC sleeve - dia. 125 × L 200 mm	0669
GEM 125 external grille - dia. 125 mm	4205

Description	Code
SRT+ 22/57 BL kit (22 m³/h - 57 dB)	0980
SRT+ 30/57 BL kit (30 m³/h - 57 dB)	0981
SRT+ 45/54 BL kit (45 m³/h - 54 dB)	0982
SRT+ HY/55 BL kit (hum-ctrl 6/45 m³/h - 55 dB)	0983

SRT+ kit = SRT+ + ISOLA + MPR + faceplate + 200 mm PVC sleeve + GEM 125 + installation instructions (individually packed in cardboard box)