

HUMIDITY CONTROLLED
EXTRACT VENTS

anjos

inspirer le bien-être

ALIZÉ HYGRO ALIZÉ TEMPO



HUMIDITY CONTROLLED VENTILATION



01/01 - CHY3/CHY4 - 2268/2269
www.eurovent-certification.com



New !

ALIZE BLUE



AD SPOT

ALIZÉ HYGRO

ALIZÉ TEMPO

- Technical Opinion No. 14.5/17-2269 for collective housing
- Technical Opinion No. 14.5/17-2268 for individual houses
- Meet regulatory requirements and combine aesthetic design with technical performance
- Made of white polystyrene
- Removable grille for easy cleaning
- Operating range 80-160 Pa

Presentation

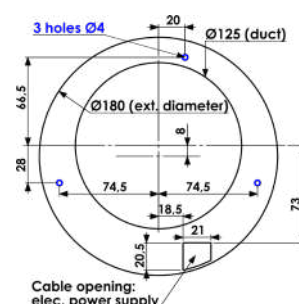
ALIZÉ HYGRO, TEMPO and VISION humidity-sensitive or timed extract vents fall within the scope of Technical Opinion for humidity controlled ventilation systems ALIZÉ. They adjust extraction air flow rates in wet rooms (kitchens, bathrooms, toilets) according to the relative humidity and feature boost timers for additional extraction.

Composition

These valves have an outer diameter of 180 mm and a thickness of 50 mm.



- 1 Removable white grille
- 2 White cover
- 3 Cover, support plate with collar, black recycled material + lip gasket
- 4 Air channel(s)



Installation

It is recommended to screw the vent using the holes in the mounting plate (removal of the vent is not necessary for routine maintenance operations)

Wall mounting

In walls, the valves push-fit directly into dia. 125 mm flexible or rigid ducts or dia. 125 mm bonded collars (code 1793).

The lip gasket ensures a tight seal and fit.



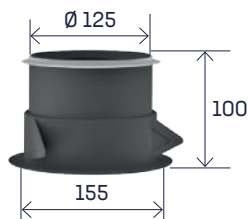
Code 1793

Ceiling mounting

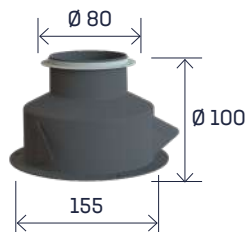
In ceilings, the valves may be fitted onto 3-pronged plasterboard sleeves, or onto either dia. 125 mm ceiling-embedded sleeves (kitchen valves) or dia. 125/80 mm ceiling-embedded sleeves (toilet/bathroom valves).

In the case of ceiling-mounted kitchen exhaust valves, a cord guide must be fitted between the wall and each valve.

dia. 125 mm three-pronged plasterboard sleeve: **Code 1794**



dia. 125/80 mm three-pronged plasterboard sleeve: **Code 1795**



Cord guide: **Code 1791**



Maintenance

ALIZÉ HYGRO and TEMPO vents require regular maintenance (at least twice a year) to maintain their efficiency. Before any intervention on the 230 V or 12 V electric vent, it is imperative to cut off the power supply at the electrical panel. On the 230 V vent, the connection box 6 can only be dismantled by a professional.

Maintenance Procedure



- Detach the grille 1 from the vent 2 and remove the duct 4 without dislodging the flap(s).
- Do not remove the support plate 3 from the duct.
- Clean the grille 1 and the duct 4 with soapy water and rinse.
- Reassemble the duct 4 ensuring the flap axes are correctly positioned 5 in the actuator forks (only one flap for toilet and bathroom vents).
- Reattach the grille to the vent.

Kitchen vents

The extraction rate of the **kitchen exhaust valves** is adjusted according to the ambient relative humidity. The opening of the timed airflow boost (30 minutes) is activated by the user.

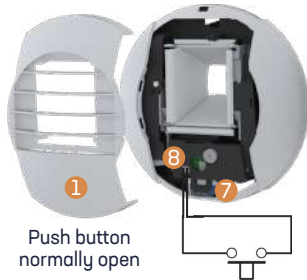
Alizé Hygro Tempo kitchen with pull cord HCC



Activated by a pull cord.
Pull on the cord to activate the additional flow.



Alizé Hygro Tempo kitchen battery-op. HCP and Alizé BLUE Hygro Tempo kitchen battery-op. HCPB



Battery-powered operation with push-button control:

HYGRO TEMPO vents are connected to the normally open push button via a 2-wire cable (2 x 0.75 mm² max) embedded and exiting at the back of the mounting plate. Connect the wires to the terminal block **8**. A push on the button allows the vent to open to the maximum extraction flow rate.



Battery-powered operation with remote control:

To pair the **ALIZE BLUE** vent with its remote control, start by removing the grille and the batterybox from the vent. Then, press and hold the button **9** on the remote control – a red LED will light up to indicate activation. While continuing to hold the button, insert the batteries into the vent. Wait for the vent flap to open. Once this step is complete, release the button: the pairing is now finished.

Supply by 2 batteries 1,5 V type LR6 (for HCP and HCPB)

Insert the 2 batteries into the connection box **7** (white box) ensuring the polarities are correct, after removing the grille **1**.

At the first power-up, the vent must perform an open/close cycle. The batteries need to be replaced when the vent emits a series of 5 beeps upon opening the flap: Remove the grille **1** to access the battery box.



Alizé Hygro Tempo élec kitchen 12 V HCBT

12 V

Power supply 12 Volts : the vent is powered by a 2-wire cable (2 x 1.5 mm²) embedded and exiting at the back of the mounting plate (see diagram on the opposite page). Provide a 12 V (AC/DC), 1 A transformer at the electrical panel.



Alizé Hygro Tempo élec kitchen 230 V HCE

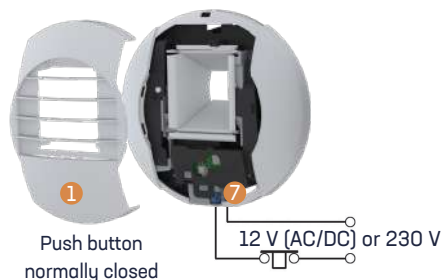
230 V

Power supply 230 Volts : the vent is powered by a 2-wire cable (2 x 1.5 mm²) embedded and exiting at the back of the mounting plate (see diagram opposite).

The 230 V~ power supply for the vent must include an appropriate protection device, marked on the electrical panel, to allow for interventions on the vent.

Class II electrical device

Before any intervention on the vent, it is imperative to cut off the power supply at the electrical panel (the timer being permanently powered).



The additional flow rate of HYGRO and TEMPO vents is controlled either by a normally closed push button. The button is connected to the vent's power supply circuit.

After removing the grille **1**, the wires are passed through the cable passage and connected to the power terminal block **7** (grey et blue for 12 V, black and yellow for 230 V).

A push on the button creates a power cut that triggers the vent to open to the maximum extraction flow rate. At the first power-up, the vent switches to the timed maximum extraction flow rate.

Accessories



1



2



3



4

Push button to open/close (code 1790) **1**

Push button for the control of the complementary flow, connection on the electric vents.

Remote and holder (code 1748) **2**

Smart remote control* for managing the additional airflow of the battery-powered vent, sold with its CR2032 battery. *The smart remote control is only compatible with ALIZÉ BLUE vents (HCPB).*

Bag of 4 batteries (code 1784) **3**

Acoustic ring (code 1789) **4**

Plastic sheath with gasket and acoustic foam. Fits inside ducts, just behind the kitchen exhaust valve.

*Use in the 2,400 MHz to 2,483.5 MHz band with a maximum radiated power of 1.49 mW

Bathroom vents

Alizé Hygro bathroom HB



Principle : humidity controlled bathroom extract vents modulate flow rates according to the relative humidity of bathrooms;

Bathroom with toilet

Bathroom vents with shared toilet ensure a modulated flow rate based on the room's relative humidity and a timed additional flow rate (30 minutes) that is user-activated for corded vents or automatic for presence detection vents (vision). Recommendations for vision vents: For wall mounting, the lens should be positioned at the lower part of the vent. For ceiling mounting, the detection lens should be oriented towards the center of the room.

Alizé Hygro Tempo bathroom with toilet with pull cord HTC



Activated by a pull cord.
Pull on the cord to activate the additional flow.

Alizé Hygro vision bathroom with toilet battery-operated HVP



Supply by 2 batteries 1,5 V type LR6.
Insert the 2 batteries into the connection box 7 (white box) ensuring the polarities are correct, after removing the grille 1.

Presence detection vents do not require any wiring.
At the first power-up, the vent must perform 2 cycles spaced about 40 seconds apart.
Batteries need to be replaced when the vent emits a series of 5 beeps upon opening the flap: remove the grille 1 to access the battery box.

Alizé Hygro vision bathroom with toilet 12 V HVBT

12 V

Power supply 12 Volts : the vent is powered by a 2-wire cable (2 x 1.5 mm²) embedded and exiting at the back of the mounting plate (see diagram on the opposite page). Provide a 12 V (AC/DC), 1 A transformer at the electrical panel.

Alizé Hygro vision bathroom with toilet 230 V HVE

230 V



12 V (AC/DC) or 230 V

Power supply 230 Volts : the vent is powered by a 2-wire cable (2 x 1.5 mm²) embedded and exiting at the back of the mounting plate (see diagram opposite).
The 230 V~ power supply for the vent must include an appropriate protection device, marked on the electrical panel, to allow for interventions on the vent.
(Class II electrical device)

Before any intervention on the vent, it is imperative to cut off the power supply at the electrical panel (the timer being permanently powered).

After removing the grille 1, the wires are passed through the cable passage and connected to the power terminal block 7 (grey and blue for 12 V, black and yellow for 230 V).
At the first power-up, the vent switches to the timed maximum extraction flow rate.

Toilet vents

Toilet vents ensure a permanent flow rate and a timed additional flow rate (30 minutes) that is user-activated for corded and 230 V vents or automatic for presence detection vents (vision).

Recommendations for vision vents: For wall mounting, the lens should be positioned at the lower part of the vent. For ceiling mounting, the detection lens should be oriented towards the center of the room.

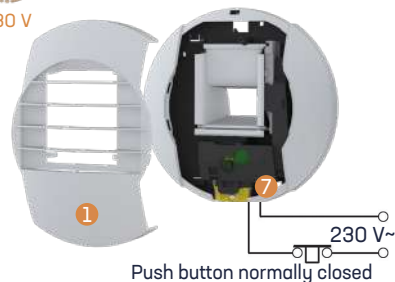
Alizé Tempo toilet with pull cord TWC



Activated by a pull cord.
Pull on the cord to activate the additional flow.

Alizé Tempo toilet 230 V TWE

230 V



Push button normally closed

Power supply 230 Volts : the vent is powered by a 2-wire cable (2 x 1.5 mm²) embedded and exiting at the back of the mounting plate.

The 230 V~ power supply for the vent must include an appropriate protection device, marked on the electrical panel, to allow for interventions on the vent (class II electrical device).

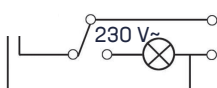
Before any intervention on the vent, it is imperative to cut off the power supply at the electrical panel (the timer being permanently powered).

The additional flow rate of the TEMPO outlets is controlled by a normally closed push button, connected to the power supply circuit of the outlet.

After removing the grille **1**, the wires are passed through the cable passage and connected to the power terminal block **7** (black and yellow for 230 V).

At the first power-up, the vent switches to the timed maximum extraction flow rate.

or powered by the light switch.
The outlet switches to maximum flow after the light is turned off.



Alizé Vision toilet battery-operated TWP



Supply by 2 batteries 1,5 V type LR6.

Insert the 2 batteries into the connection box **7** (white box) ensuring the polarities are correct, after removing the grille **1**.

Presence detection vents do not require any wiring.

At the first power-up, the vent must perform 2 cycles spaced about 40 seconds apart.

Batteries need to be replaced when the vent emits a series of 5 beeps upon opening the flap: remove the grille **1** to access the battery box.

Alizé Vision toilet 12 V TWBT

12 V

Power supply 12 Volts : the vent is powered by a 2-wire cable (2 x 1.5 mm²) embedded and exiting at the back of the mounting plate (see diagram on the opposite page). Provide a 12 V (AC/DC), 1 A transformer at the electrical panel.

Alizé Vision toilet 230 V TWE

230 V



12 V (AC/DC) or 230 V

Power supply 230 Volts : the vent is powered by a 2-wire cable (2 x 1.5 mm²) embedded and exiting at the back of the mounting plate.

The 230 V~ power supply for the vent must include an appropriate protection device, marked on the electrical panel, to allow for interventions on the vent (class II electrical device).

Before any intervention on the vent, it is imperative to cut off the power supply at the electrical panel (the timer being permanently powered).

After removing the grille **1**, the wires are passed through the cable passage and connected to the power terminal block **7** (grey and blue for 12 V, black and yellow for 230 V).

At the first power-up, the vent switches to the timed maximum extraction flow rate.

Accessories



1



2



3

Push button tp open/close (code 1790) **1**

Push button for the control of the complementary flow, connection to the Alizé Tempo toilet vent 230 V.

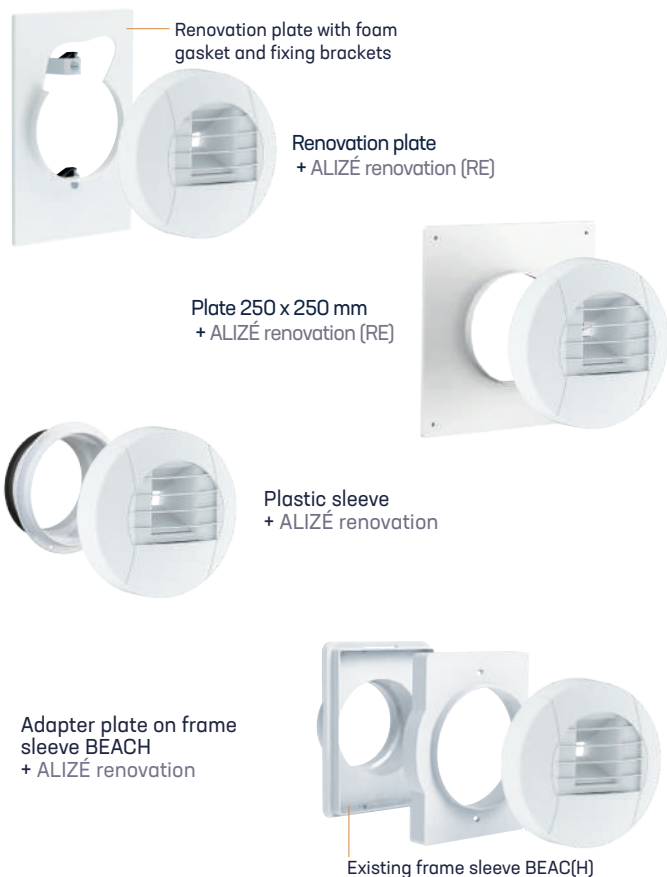
Bag of 4 batteries (code 1784) **2**

Acoustic foam ALIZÉ HYGRO + fixing part (code 1788) **3**

Melamine foam. Fits with the plastic retaining ring behind toilet.

ALIZÉ renovation

All humidity controlled and tempo vents are available in a renovation version (outlet thickness 70 mm).



Mounting on renovation plate

Made of white polystyrene, the renovation plate equipped with 2 brackets of 75 mm width is installed once the work is completed on rectangular openings with dimensions (w x h) 80 x 170 to 110 x 245 mm. The seal is ensured by a foam gasket.

Installation : press the plate against the wall by inserting the fixing claws into the opening. Tighten the screws moderately. Fit the vent.

Mounting on renovation plate 250 x 250 mm

The plate is mounted on openings with dimensions 100 x 100 to 200 x 200 mm using 4 fixing screws (fixing center distance 220 mm). The seal is ensured by a foam gasket.

Mounting on existing sleeve

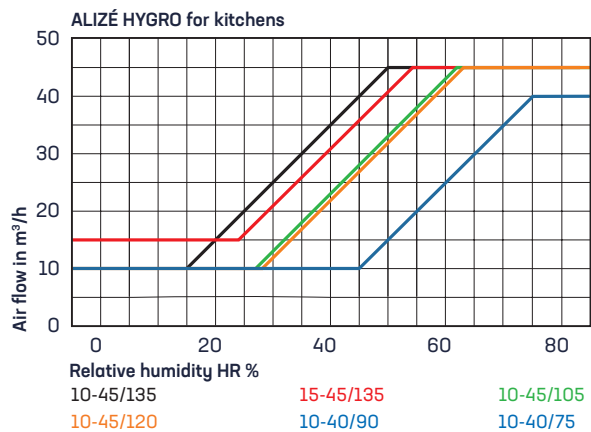
ALIZÉ renovation vent can be mounted on plastic sleeves with diameters of 99, 110, 116, 120, 125, and 160 mm.

Mounting on existing frame sleeve

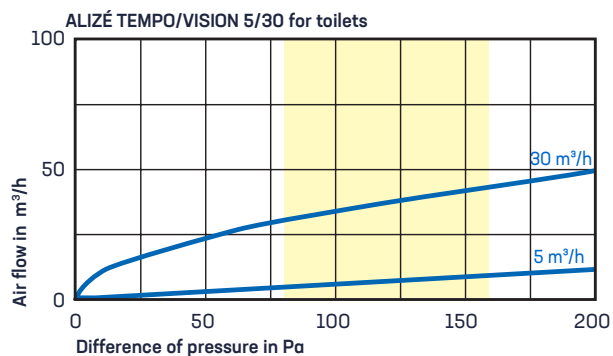
Mount the adapter plate on the BEAC(H) frame sleeve. Fit the vent.

Characteristics

Humidity (at 80 Pa)



Air flow



Acoustic

ALIZÉ	Lw in dB(A)			Dn,e,w (C) dB	
	100 Pa	136 Pa	160 Pa		*
HYGRO 10-40/90 m³/h	31	35	37	55	59 ⁽¹⁾
HYGRO 15-45/135 m³/h	31	35	37	55	58 ⁽¹⁾
HYGRO 10-40 m³/h	28	35	37	56	60 ⁽²⁾
HYGRO 15-45 m³/h	28	35	37	56	60 ⁽²⁾
TEMPO/VISION 5-30 m³/h	28	35	37	56	60 ⁽²⁾

(*): Valves fitted with (1) acoustic ring (code 1789)

(2) acoustic foam (code 1788)

The values in orange are certified.

Characteristics

Control

Timer power supply	Batteries (2 x 1,5 V)			12 V		230 V		
Control	Cord	Push button	Presence detection	Remote control	Push button	Presence detection	Push button	Presence detection
ALIZÉ HYGRO TEMPO Kitchen	HCC	HCP		HCPB	HCBT		HCE	
ALIZÉ HYGRO TEMPO Bathroom/toilet	HTC							
ALIZÉ HYGRO VISION Bathroom/toilet			HVP			HVBT		HVE
ALIZÉ TEMPO Toilet	TWC						TWE	
ALIZÉ VISION Toilet			TWVP			TWVBT		TWVE

Product codes

Kitchen valves

Designation	Packg.	Code
ALIZÉ HYGRO TEMPO with pull cord 10-40/75 HCC01	12	1701
ALIZÉ HYGRO TEMPO with pull cord 10-40/90 HCC02	12	1702
ALIZÉ HYGRO TEMPO with pull cord 10-45/105 HCC03	12	1703
ALIZÉ HYGRO TEMPO with pull cord 10-45/120 HCC04	12	1704
ALIZÉ HYGRO TEMPO with pull cord 10-45/135 HCC05	12	1705
ALIZÉ HYGRO TEMPO with pull cord 15-45/135 HCC06	12	1706
ALIZÉ BLUE HYGRO TEMPO battery 10-40/75 HCPB01*	12	1741
ALIZÉ BLUE HYGRO TEMPO battery 10-40/90 HCPB02*	12	1742
ALIZÉ BLUE HYGRO TEMPO battery 10-45/105 HCPB03*	12	1743
ALIZÉ BLUE HYGRO TEMPO battery 10-45/120 HCPB04*	12	1744
ALIZÉ BLUE HYGRO TEMPO battery 10-45/135 HCPB05*	12	1745
ALIZÉ BLUE HYGRO TEMPO battery 15-45/135 HCPB06*	12	1746
ALIZÉ HYGRO TEMPO battery-op. (3 V) 10-40/75 HCP01	12	1711
ALIZÉ HYGRO TEMPO battery-op. (3 V) 10-40/90 HCP02	12	1712
ALIZÉ HYGRO TEMPO battery-op. (3 V) 10-45/105 HCP03	12	1713
ALIZÉ HYGRO TEMPO battery-op. (3 V) 10-45/120 HCP04	12	1714
ALIZÉ HYGRO TEMPO battery-op. (3 V) 10-45/135 HCP05	12	1715
ALIZÉ HYGRO TEMPO battery-op. (3 V) 15-45/135 HCP06	12	1716
ALIZÉ HYGRO TEMPO 12 V 10-40/75 HCBT01	12	1721
ALIZÉ HYGRO TEMPO 12 V 10-40/90 HCBT02	12	1722
ALIZÉ HYGRO TEMPO 12 V 10-45/105 HCBT03	12	1723
ALIZÉ HYGRO TEMPO 12 V 10-45/120 HCBT04	12	1724
ALIZÉ HYGRO TEMPO 12 V 10-45/135 HCBT05	12	1725
ALIZÉ HYGRO TEMPO 12 V 15-45/135 HCBT06	12	1726
ALIZÉ HYGRO TEMPO élec (230 V) 10-40/75 HCE01	12	1731
ALIZÉ HYGRO TEMPO élec (230 V) 10-40/90 HCE02	12	1732
ALIZÉ HYGRO TEMPO élec (230 V) 10-45/105 HCE03	12	1733
ALIZÉ HYGRO TEMPO élec (230 V) 10-45/120 HCE04	12	1734
ALIZÉ HYGRO TEMPO élec (230 V) 10-45/135 HCE05	12	1735
ALIZÉ HYGRO TEMPO élec (230 V) 15-45/135 HCE06	12	1736

*New Alizé BLUE: Remote control and holder included

Retrofit accessories

Designation	Packg.	Code
Renovation plate 180 x 278 mm without spacer	12	1937
Renovation plate 250 x 250 mm to be screwed (4 holes, 220 mm center distance)	30	1986
Renovation plate 250 x 250 mm to be screwed with gasket (4 holes, 220 mm center distance)	30	1987
Adapter plate on BEAC(H) frame sleeve (dimensions 148 x 202 mm)	25	1945

ALIZÉ HYGRO or TEMPO renovation: Add RE after the vent code

Toilet/bathroom valves

Designation	Packg.	Code
ALIZÉ HYGRO 5-40 HB01	12	1751
ALIZÉ HYGRO 10-40 HB02	12	1752
ALIZÉ HYGRO 10-45 HB03	12	1753
ALIZÉ HYGRO 15-45 HB04	12	1754
ALIZÉ HYGRO TEMPO with pull cord 5-40/30 HTC01	12	1755
ALIZÉ HYGRO TEMPO with pull cord 10-40/40 HTC02	12	1756
ALIZÉ HYGRO TEMPO with pull cord 10-45/45 HTC03	12	1757
ALIZÉ HYGRO TEMPO with pull cord 15-45/40 HTC04	12	1758
ALIZÉ HYGRO TEMPO with pull cord 15-45/45 HTC05	12	1759
ALIZÉ HYGRO VISION battery-op. (3V) 5-40/30 HVPO1	12	1760
ALIZÉ HYGRO VISION battery-op. (3V) 10-40/40 HVPO2	12	1761
ALIZÉ HYGRO VISION battery-op. (3V) 10-45/45 HVPO3	12	1762
ALIZÉ HYGRO VISION battery-op. (3V) 15-45/40 HVPO4	12	1763
ALIZÉ HYGRO VISION battery-op. (3V) 15-45/45 HVPO5	12	1764
ALIZÉ HYGRO VISION 12 V 5-40/30 HVBT01	12	1765
ALIZÉ HYGRO VISION 12 V 10-40/40 HVBT02	12	1766
ALIZÉ HYGRO VISION 12 V 10-45/45 HVBT03	12	1767
ALIZÉ HYGRO VISION 12 V 15-45/40 HVBT04	12	1768
ALIZÉ HYGRO VISION 12 V 15-45/45 HVBT05	12	1769
ALIZÉ HYGRO VISION élec (230 V) 5-40/30 HVE01	12	1770
ALIZÉ HYGRO VISION élec (230 V) 10-40/40 HVE02	12	1771
ALIZÉ HYGRO VISION élec (230 V) 10-45/45 HVE03	12	1772
ALIZÉ HYGRO VISION élec (230 V) 15-45/40 HVE04	12	1773
ALIZÉ HYGRO VISION élec (230 V) 15-45/45 HVE05	12	1774
ALIZÉ TEMPO with pull cord 5/30 TWC	12	1775
ALIZÉ TEMPO élec (230 V) 5/30 TWE	12	1776
ALIZÉ VISION battery-op. (3 V) 5/30 TWVP	12	1777
ALIZÉ VISION 12 V 5/30 TWBT	12	1778
ALIZÉ VISION élec 230 V 5/30 TWVE	12	1779

Accessories

Designation	Packg.	Code
Remote control for Alize BLUE	1	1748
Bag of 4 batteries 1,5 Volts LR6	1	1784
Acoustic foam ALIZÉ HYGRO + fixing part	60	1788
Acoustic ring ALIZÉ HYGRO	18	1789
Push button to open/close (230 V or batteries)	18	1790
Cord guide for ceiling-mounted valves	10	1791
Plastic collar Ø125, L. 65 mm - gasketed	50	1793
3-pronged plasterboard sleeve Ø125, L. 100 mm	30	1794
3-pronged plasterboard sleeve Ø125/80, L. 100 mm	45	1795
Plastic ceiling-embedded sleeve Ø125, L. 275 mm	16	1796
Plastic ceiling-embedded sleeve Ø125/80 L. 275 mm	18	1797

anjos